

Indexed Annuity Care[®]



Indexed Annuity Care[®] Illustration

Individual Single Premium Deferred Fixed Indexed Annuity
with Index-Linked Interest and a Long-Term Care Insurance Rider

Presented on:
May 16, 2024

Prepared for:
William

Prepared by:
JACK L LENENBERG

Insurance License Number 0h07738

NOT A DEPOSIT	NOT FDIC OR NCUSIF INSURED	NOT GUARANTEED BY THE INSTITUTION	NOT INSURED BY ANY FEDERAL GOVERNMENT AGENCY	MAY GO DOWN IN VALUE
---------------	-------------------------------	--------------------------------------	----------------------------------------------------	-------------------------

Products and financial services provided by:

The State Life Insurance Company[®] | *a OneAmerica[®] company*
One American Square, P.O. Box 6062 | Indianapolis, IN 46206-6062

THIS IS AN ILLUSTRATION ONLY. AN ILLUSTRATION IS NOT INTENDED TO PREDICT ACTUAL PERFORMANCE. INTEREST RATES, DIVIDENDS, OR VALUES THAT ARE SET FORTH IN THE ILLUSTRATION ARE NOT GUARANTEED, EXCEPT FOR THOSE ITEMS CLEARLY LABELED AS GUARANTEED.

THIS ILLUSTRATION IS NOT AN OFFER TO CONTRACT

Indexed Annuity Care[®]

Individual Single Premium Deferred Fixed Indexed Annuity with Index-Linked Interest and a Long-Term Care Insurance Rider - Illustration

Prepared for:

William

Gender: Male

Age: 69

State: CA

Premium: \$200,000.00

Annuity Type: Non-Qualified

It is assumed the single premium will be paid no later than upon issuance of the contract.

Presented by: JACK L LENENBERG

Individual Single Premium Deferred Fixed Indexed Annuity with Index-Linked Interest and a Long-Term Care Insurance Rider

Indexed Annuity Care is a single premium deferred fixed indexed annuity that combines long-term asset growth and long-term care (LTC) benefits. This annuity includes a Long-Term Care Insurance Rider that provides you with a combination of annuity value and long-term care benefits should you need them. This annuity features the ability to link the contract's growth through several crediting strategies linked to the S&P 500[®] Index or to a traditional fixed interest rate option.

Individual Single Premium Deferred Fixed Indexed Annuity with Index-Linked Interest, SA36 (CA)

This indexed annuity contract has both a fixed account and indexed accounts. The fixed account provides a fixed rate of interest which is set at the beginning of each contract year. The fixed interest rate will be declared monthly for new business and renewal anniversaries. Once your contract is issued, this rate will never be less than your guaranteed minimum interest rate.

Each indexed account credits interest based on the performance of the S&P 500[®] Index, subject to a formula known as an Indexed Account Strategy crediting method, which may include a cap or a participation rate. In addition, any interest earned in a given interest crediting period will be locked-in so that future declines in the S&P 500[®] Index will not take away previously credited interest.

Interest: The amount and method of determining and crediting interest under this annuity contract depends on how you choose to allocate the Premium between the Fixed Account and the Indexed Account Strategies. You may change your allocation at any time throughout the year, but it is not effective until the next Contract Anniversary date.

Fixed Account: For the amounts in the Fixed Account, the interest rate credited is determined by the Company at the beginning of each Contract Year and will not change for that year. Interest is compounded daily, but credited monthly, to the Fixed Account. The Company may change the fixed account interest rate for subsequent Contract Years, but it will never be less than the Guaranteed Minimum Interest Rate.

Guaranteed Minimum Interest Rate: 2.90%. This rate is subject to change prior to delivery of the annuity and may be higher or lower than the rate stated here.

Indexed Account Strategy: For the amounts in an Indexed Account Strategy, the interest will vary depending, in part, on the measured change of an external index. The interest rate for an Indexed Account Strategy will never be less than zero. The interest will be credited to amounts held in an Indexed Account Strategy at the end of the Contract Year. No interest will be credited to the amounts in an Indexed Account Strategy if the amounts are not held in the Indexed Account Strategy until the end of the Contract Year.

S&P 500[®] Index: Any portion of the account value allocated to an Indexed Account Strategy will earn interest based on the movement of the S&P 500[®] Index. Each Indexed Account Strategy has its own crediting method.

The S&P 500[®] Index interest crediting options are linked to the performance of the S&P 500[®] Index; however they do not participate directly in the Index. These options are protected by a 0.00% floor which guarantees that the interest credited to your contract will never be lower than 0.00% as a result of declines in the S&P 500[®] Index. If no price is available on a specific day, we use the price from the close of business on the next business day.

THIS ILLUSTRATION IS NOT AN OFFER TO CONTRACT

Indexed Annuity Care®

Individual Single Premium Deferred Fixed Indexed Annuity with Index-Linked Interest and a Long-Term Care Insurance Rider - Illustration

Prepared for:

William

Gender: Male

Age: 69

State: CA

Premium: \$200,000.00

Annuity Type: Non-Qualified

It is assumed the single premium will be paid no later than upon issuance of the contract.

Presented by: JACK L LENENBERG

Indexed Account Strategy Options: Indexed Annuity Care offers four distinct Indexed Account Strategy crediting methods. For each Indexed Account Strategy, the index value will be as of the close of business on the Index Date.

Point-to-Point with Cap: The interest that is earned is based on the movement of the Index over a twelve month period, beginning on the Index Date through the anniversary of that date. The amount of interest credited is “capped”. The Company may set a new cap each year. The cap is guaranteed never to be less than 2.00% for this annuity contract.

Point-to-Point with Participation Rate: The interest that is earned is based on the movement of the Index over a twelve month period, beginning on the Index Date through the anniversary of that date. The amount of interest credited is limited to the amount of the participation rate. The Company may set a new participation rate each year, but will never be less than 10%.

Monthly Average with Cap: The interest that is earned is based on a monthly average of the Index each month over a twelve month period, beginning on the Index Date through the anniversary of that date. The amount of interest credited is “capped”. The Company may set a new cap each year. The cap is guaranteed never to be less than 2.00% for this annuity contract.

Monthly Average with Participation Rate: The interest that is earned is based on a monthly average of the Index each month over a twelve month period, beginning on the Index Date through the anniversary of that date. The amount of interest credited is limited to the amount of the participation rate. The Company may set a new participation rate each year, but will never be less than 10%.

Hypothetical Scenarios

The following pages display hypothetical scenarios of your contract based on the specified inputs of this illustration under both guaranteed and non-guaranteed assumptions. All values assume initial premium of \$200,000 allocated among the available interest crediting options as follows:

Premium Allocation and Current Rate Assumptions

Account Strategies Chosen	First Contract Year	
	Index Cap/ Participation Rate	Initial Allocation
Point-to-Point with Cap	6.30%	100%
Point-to-Point with Participation Rate	45.00%	0%
Monthly Average with Cap	7.75%	0%
Monthly Average with Participation Rate	75.00%	0%
Fixed Account	3.65%	0%

The declared index credit caps and rates shown above are for the first year and are subject to change.

Interest Crediting Assumptions - Guaranteed Rates

The Hypothetical Scenarios based on Guaranteed Rates assume the guaranteed minimum 0.00% interest credit in all years for premium allocated to an Index-Linked Interest Crediting Option. Premium allocated to the Fixed Account Option is credited with the declared interest rate above for the first contract year and the Guaranteed Minimum Interest Rate thereafter. In this illustration, only those values clearly labeled as guaranteed are guaranteed.

THIS ILLUSTRATION IS NOT AN OFFER TO CONTRACT

Indexed Annuity Care®

Individual Single Premium Deferred Fixed Indexed Annuity with Index-Linked Interest and a Long-Term Care Insurance Rider - Illustration

Prepared for:

William

Gender: Male

Age: 69

State: CA

Premium: \$200,000.00

Annuity Type: Non-Qualified

It is assumed the single premium will be paid no later than upon issuance of the contract.

Presented by: JACK L LENENBERG

Interest Crediting Assumptions - Current Rates (Projected Non-Guaranteed Interest Rate)

The Hypothetical Scenarios based on Current Rates assume that the Index-Linked Interest Crediting Options listed in the previous chart will perform in 10 year cycles exactly as it has over the past 10 calendar years. It also assumes that the current declared rates listed in the previous chart for both the Index-Linked Interest Crediting Options and the Fixed Account Option will remain the same for all contract years.

It is likely that the Index will not repeat historical performance, the non-guaranteed elements - such as caps, participation rates, and other interest crediting adjustments - will change, and actual values will be higher or lower than those in this illustration, but they will not be less than the minimum guarantees. The benefits and values in this illustration are not guarantees or even estimates of the amounts you can expect from your annuity. The assumptions on which they are based are subject to change by the Company.

Surrender Charges: A surrender charge is the amount that will be assessed on withdrawals from your contract, when applicable. Surrender charges will be waived on withdrawals up to the penalty free withdrawal amount. You can withdraw up to 10% of the account value, each contract year after the first year, free of a surrender charge. Surrender charges will also be waived upon payment of the proceeds at the time of death.

The surrender charge is a percentage of the amount of the Account Value withdrawn. The surrender charges will be deducted in the first nine years as follows:

Contract Year	1	2	3	4	5	6	7	8	9	10+
Surrender Charge	8%	8%	7%	6%	5%	4%	3%	2%	1%	0%

Guaranteed Minimum Surrender Value: The Guaranteed Minimum Surrender Value is equal to the greater of the Account Value less any applicable surrender charges or 90% of the Net Single Premium accumulated at the Fixed Account Guaranteed Minimum Interest Rate, less any withdrawals. The Fixed Account Guaranteed Minimum Interest Rate will not change for the duration of your annuity contract.

Tax Information: This contract is intended to be treated as an annuity contract for federal income tax purposes. The annuity may be issued with one or more riders or endorsements that add provisions for use with a qualified retirement arrangement. In any case, distributions from the annuity will generally be subject to income tax to the extent they represent earnings on the contract or contributions to a qualified retirement arrangement. Taxable distributions made before you reach age 59 ½ may be subject to a 10% penalty. As with all tax matters, you should consult your personal tax advisor.

THIS ILLUSTRATION IS NOT AN OFFER TO CONTRACT

Indexed Annuity Care®

Individual Single Premium Deferred Fixed Indexed Annuity with Index-Linked Interest and a Long-Term Care Insurance Rider - Illustration

Prepared for:

William

Gender: Male

Age: 69

State: CA

Premium: \$200,000.00

Annuity Type: Non-Qualified

It is assumed the single premium will be paid no later than upon issuance of the contract.

Presented by: JACK L LENENBERG

Long-Term Care (LTC) Provisions:

Comprehensive Long-Term Care Insurance Rider, R529 (CA) PPA - This is a LTC insurance rider that covers qualified LTC services, including residential care facilities, nursing facilities, or home care and community-based services.

The LTC Benefit Balance can be used to pay for qualified LTC expenses incurred by an annuitant, joint annuitants, or an annuitant and eligible person (hereafter, referred to as “covered person”) after a 60 calendar day elimination period is met. The LTC Benefit Balance will no longer be available if you elect either a full surrender or once annuity payments begin. When LTC withdrawals are being paid from the LTC Benefit Balance, the Account Value is reduced on a proportional basis.

This Rider for long-term care insurance is intended to be a federally qualified long-term care insurance rider and may qualify you for federal and state tax benefits.

Please refer to the Annuity Disclosure and the Annuity Buyer’s Guide, available from your insurance producer or the Company at your request.

Optional LTC Provisions:

Continuation of Benefits for Long-Term Care Insurance Rider, R530 (CA) PPA - This is an optional rider that continues the long-term care benefits payable under the base contract LTC rider up to the amount of the Continuation of Benefit Balance. The COB Benefit becomes eligible after benefit payments under the base contract LTC rider have reduced the long-term care benefit balance to zero. No death benefit is payable under this rider.

This Rider is intended to be a federally qualified long-term care insurance rider and may qualify you for federal and state tax benefits.

Optional Inflation Protection for Continuation of Benefits for Long-Term Care Insurance Rider

The optional inflation protection increases the benefit amount under this rider. At the beginning of each contract year, except the first, the COB Benefits Balance and the monthly continuation of benefit limit for this rider will increase by the inflation rate chosen.

Optional Nonforfeiture Benefit for Continuation of Benefits for Long-Term Care Insurance Rider

If the nonforfeiture benefit is selected and this rider lapses due to nonpayment of COB Premium, you will receive a shortened benefit period where the COB Balance will be the total COB premium paid for this rider.

Options and riders are not available in all states and may vary by state.

THIS ILLUSTRATION IS NOT AN OFFER TO CONTRACT

Indexed Annuity Care®

Individual Single Premium Deferred Fixed Indexed Annuity with Index-Linked Interest and a Long-Term Care Insurance Rider - Illustration

Prepared for:

William

Gender: Male

Age: 69

State: CA

Premium: \$200,000.00

Annuity Type: Non-Qualified

It is assumed the single premium will be paid no later than upon issuance of the contract.

Presented by: JACK L LENENBERG

Column Descriptions:

End of Contract Year: This is measured from the date of contract issue.

Age: This represents the annuitant's (or joint equal age) at the end of the contract year.

Premium: This is the single premium paid to us for the contract, less any applicable premium taxes (not all states require the payment of a premium tax), and less the premium for any additional benefits or riders, if applicable.

Account Value: This is the total value of the contract at the end of the year, reflecting interest credits. This does not reflect any partial withdrawals or long-term care (LTC) withdrawals.

Cash Surrender Value: This is the amount available upon full surrender of the contract, which will be the greater of the Account Value less any applicable surrender charges or the Guaranteed Minimum Surrender Value.

LTC Monthly Withdrawal Limit: This is the maximum amount of long-term care withdrawals payable.

LTC Benefit Balance: This is the amount available for long-term care withdrawals. Each year, the LTCBB is the greater of the Account Value multiplied by the Account Value Multiplier or the net single premium multiplied by the Adjusted Net Single Premium Factor. This is reflected in the following table:

Contract Years and LTC Multipliers

Contract Year	Account Value Multiplier	Adjusted Net Single Premium Factor
1	1.01	1.00
2	1.02	1.00
3	1.03	1.00
4	1.04	1.00
5	1.05	1.00
6	1.06	1.00
7	1.07	1.00
8	1.08	1.00
9	1.09	1.00
10	1.10	1.00
11	1.11	1.15
12	1.12	1.20
13	1.13	1.25
14	1.14	1.30
15	1.15	1.35
16	1.15	1.40
17	1.15	1.45
18	1.15	1.50
19	1.15	1.50
20+	1.15	1.50

THIS ILLUSTRATION IS NOT AN OFFER TO CONTRACT

Indexed Annuity Care[®]

Individual Single Premium Deferred Fixed Indexed Annuity with Index-Linked Interest and a Long-Term Care Insurance Rider - Illustration

Prepared for:

William

Gender: Male

Age: 69

State: CA

Premium: \$200,000.00

Annuity Type: Non-Qualified

It is assumed the single premium will be paid no later than upon issuance of the contract.

Presented by: JACK L LENENBERG

Account Value Summary Based on Guaranteed Rates

End of Contract Year	Age of Annuitant	Premium	Account Value	Cash Surrender Value	LTC Benefit Balance	LTC Monthly Withdrawal Limit
1	70	\$200,000.00	\$200,000	\$185,220	\$202,000	\$8,417
2	71	\$0.00	\$200,000	\$190,591	\$204,000	\$8,500
3	72	\$0.00	\$200,000	\$196,119	\$206,000	\$8,583
4	73	\$0.00	\$200,000	\$201,806	\$209,878	\$8,745
5	74	\$0.00	\$200,000	\$207,658	\$218,041	\$9,085
6	75	\$0.00	\$200,000	\$213,680	\$226,501	\$9,438
7	76	\$0.00	\$200,000	\$219,877	\$235,269	\$9,803
8	77	\$0.00	\$200,000	\$226,254	\$244,354	\$10,181
9	78	\$0.00	\$200,000	\$232,815	\$253,768	\$10,574
10	79	\$0.00	\$200,000	\$239,567	\$263,523	\$10,980
15	84	\$0.00	\$200,000	\$276,378	\$317,834	\$13,243
20	89	\$0.00	\$200,000	\$318,845	\$366,672	\$15,278
25	94	\$0.00	\$200,000	\$367,838	\$423,014	\$17,626
30	99	\$0.00	\$200,000	\$424,359	\$488,013	\$20,334
35	104	\$0.00	\$200,000	\$489,565	\$563,000	\$23,458
40	109	\$0.00	\$200,000	\$564,791	\$649,509	\$27,063
45	114	\$0.00	\$200,000	\$651,575	\$749,311	\$31,221

THIS ILLUSTRATION IS NOT AN OFFER TO CONTRACT

Indexed Annuity Care®

Individual Single Premium Deferred Fixed Indexed Annuity with Index-Linked Interest and a Long-Term Care Insurance Rider - Illustration

Prepared for:

William

Gender: Male

Age: 69

State: CA

Premium: \$200,000.00

Annuity Type: Non-Qualified

It is assumed the single premium will be paid no later than upon issuance of the contract.

Presented by: JACK L LENENBERG

Account Value Summary Based on Current (Non-Guaranteed) Rates

End of Contract Year	Age of Annuitant	Premium	Account Value	Cash Surrender Value	LTC Benefit Balance	LTC Monthly Withdrawal Limit
1	70	\$200,000.00	\$212,600	\$195,592	\$214,726	\$8,947
2	71	\$0.00	\$212,600	\$195,592	\$216,852	\$9,036
3	72	\$0.00	\$225,994	\$210,174	\$232,774	\$9,699
4	73	\$0.00	\$240,231	\$225,818	\$249,841	\$10,410
5	74	\$0.00	\$240,231	\$228,220	\$252,243	\$10,510
6	75	\$0.00	\$255,366	\$245,151	\$270,688	\$11,279
7	76	\$0.00	\$271,454	\$263,310	\$290,456	\$12,102
8	77	\$0.00	\$288,556	\$282,785	\$311,640	\$12,985
9	78	\$0.00	\$288,556	\$285,670	\$314,526	\$13,105
10	79	\$0.00	\$306,735	\$306,735	\$337,408	\$14,059
15	84	\$0.00	\$368,436	\$368,436	\$423,702	\$17,654
20	89	\$0.00	\$470,431	\$470,431	\$540,995	\$22,541
25	94	\$0.00	\$565,061	\$565,061	\$649,820	\$27,076
30	99	\$0.00	\$721,487	\$721,487	\$829,710	\$34,571
35	104	\$0.00	\$866,619	\$866,619	\$996,612	\$41,526
40	109	\$0.00	\$1,106,525	\$1,106,525	\$1,272,504	\$53,021
45	114	\$0.00	\$1,329,111	\$1,329,111	\$1,528,477	\$63,687

See Account Value Summary Based on Guaranteed Rates Table for Guaranteed Rates. Benefits and values are not guaranteed. Assumptions upon which values are based are subject to change by the insurer. Results may vary.

THIS ILLUSTRATION IS NOT AN OFFER TO CONTRACT

Indexed Annuity Care®

Individual Single Premium Deferred Fixed Indexed Annuity with Index-Linked Interest and a Long-Term Care Insurance Rider - Illustration

Prepared for:

William

Gender: Male

Age: 69

State: CA

Premium: \$200,000.00

Annuity Type: Non-Qualified

It is assumed the single premium will be paid no later than upon issuance of the contract.

Presented by: JACK L LENENBERG

Annuity Payment Options:

This single premium indexed annuity contract is a deferred annuity contract. This annuity contract guarantees an annuity income stream of payments upon the Maturity Date. Since payouts begin at a future date, you don't pay taxes on the interest the annuity earns until the contract value is paid to you. The contract provides a choice of settlement options, shown below, so you can choose an income stream that is appropriate for your needs. The automatic annuity option is Life Annuity with Guaranteed Period of 10 years.

The annuity payment options available are:

Income for a Fixed Period

Life Annuity

Life Annuity with a Guaranteed Period

Joint and Survivor Life Annuity

Joint and Survivor Life Annuity with a Guaranteed Period

This annuity payment estimation is based on annuitization occurring in contract year 10:

	Guaranteed Monthly Payment	Non-Guaranteed Monthly Payment
Annuitized Value	\$239,567	\$306,735
Income Rate per \$1,000	\$5.29	\$5.29
Life Annuity with 120 Guaranteed Payments	\$1,267.31	\$1,622.63

The amount of the monthly payment will be based on the cash surrender value. The LTCBB is no longer available if either a full contract surrender or annuitization is elected. California may impose a tax at time of annuitization. The income payments illustrated above do not reflect the deduction of this tax.

Hypothetical Scenarios:

Indexed Annuity Care contains Index-Linked Interest Crediting Options that are tied to the performance of the S&P 500® Index. The following illustrations demonstrate how the contract would perform over a 10-year period under three hypothetical

Scenario 1 - 'Most Recent' Scenario

This scenario uses values from the S&P 500® Index over the past 10 calendar years, ending December 31, 2023.

Scenario 2 - The 'Low' Scenario

This scenario uses values from the S&P 500® Index from the 10-year period out of the last 20 calendar years in which the Index experienced the lowest average annual growth.

Scenario 3 - The 'High' Scenario

This scenario uses values from the S&P 500® Index from the 10-year period out of the last 20 calendar years in which the Index experienced the highest average annual growth.

Note: The 'High' Scenario represents the 10-year period during the last 20 years resulting in the most growth in the S&P 500® Index. This is not necessarily the 10-year period during the last 20 years when the largest amount of indexed interest would have been credited to the strategy. The 'Low' Scenario represents the 10-year period during the last 20 years resulting in the least growth in the S&P 500® Index. Again, this is not necessarily the 10-year period during the last 20 years when the smallest amount of indexed interest would have been credited to the strategy.

Tabular and graphical results of the three scenarios are provided.

THIS ILLUSTRATION IS NOT AN OFFER TO CONTRACT

Indexed Annuity Care®

Individual Single Premium Deferred Fixed Indexed Annuity with Index-Linked Interest and a Long-Term Care Insurance Rider - Illustration

Hypothetical Account Performance of the S&P 500® Index - Point-to-Point with Cap

Annual Cap: 6.30%
Allocation: 100.00%

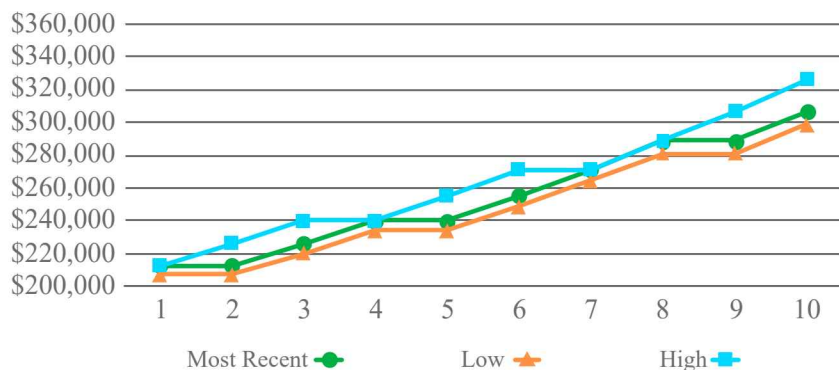
The 'Most Recent' Scenario
1/1/14-12/31/23

The 'Low' Scenario
1/1/07-12/31/16

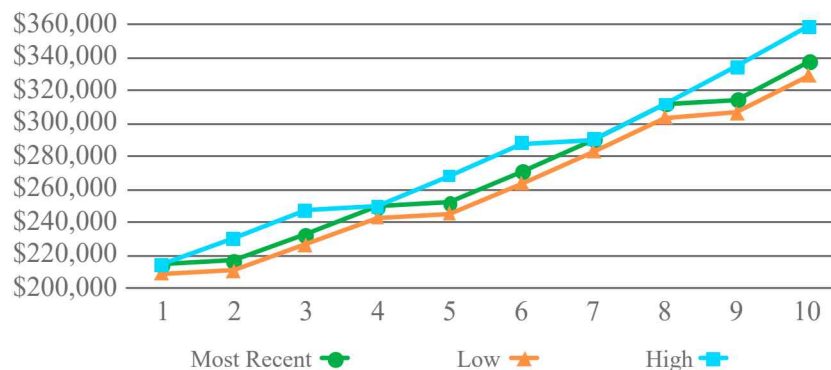
The 'High' Scenario
1/1/12-12/31/21

End of Contract Year	Geometric Mean Annual Effective Rate 4.37%					Geometric Mean Annual Effective Rate 4.09%					Geometric Mean Annual Effective Rate 5.01%				
	Index Change	Credited Interest Rate	Account Value	LTC Benefit Balance	LTC Monthly Withdrawal	Index Change	Credited Interest Rate	Account Value	LTC Benefit Balance	LTC Monthly Withdrawal	Index Change	Credited Interest Rate	Account Value	LTC Benefit Balance	LTC Monthly Withdrawal
1	11.39%	6.30%	\$212,600	\$214,726	\$8,947	3.53%	3.53%	\$207,060	\$209,131	\$8,714	13.41%	6.30%	\$212,600	\$214,726	\$8,947
2	-0.73%	0.00%	\$212,600	\$216,852	\$9,036	-38.49%	0.00%	\$207,060	\$211,201	\$8,800	29.60%	6.30%	\$225,994	\$230,514	\$9,605
3	9.54%	6.30%	\$225,994	\$232,774	\$9,699	23.45%	6.30%	\$220,105	\$226,708	\$9,446	11.39%	6.30%	\$240,231	\$247,438	\$10,310
4	19.42%	6.30%	\$240,231	\$249,841	\$10,410	12.78%	6.30%	\$233,971	\$243,330	\$10,139	-0.73%	0.00%	\$240,231	\$249,841	\$10,410
5	-6.24%	0.00%	\$240,231	\$252,243	\$10,510	0.00%	0.00%	\$233,971	\$245,670	\$10,236	9.54%	6.30%	\$255,366	\$268,134	\$11,172
6	28.88%	6.30%	\$255,366	\$270,688	\$11,279	13.41%	6.30%	\$248,712	\$263,634	\$10,985	19.42%	6.30%	\$271,454	\$287,741	\$11,989
7	16.26%	6.30%	\$271,454	\$290,456	\$12,102	29.60%	6.30%	\$264,380	\$282,887	\$11,787	-6.24%	0.00%	\$271,454	\$290,456	\$12,102
8	26.89%	6.30%	\$288,556	\$311,640	\$12,985	11.39%	6.30%	\$281,036	\$303,519	\$12,647	28.88%	6.30%	\$288,556	\$311,640	\$12,985
9	-19.44%	0.00%	\$288,556	\$314,526	\$13,105	-0.73%	0.00%	\$281,036	\$306,330	\$12,764	16.26%	6.30%	\$306,735	\$334,341	\$13,931
10	24.23%	6.30%	\$306,735	\$337,408	\$14,059	9.54%	6.30%	\$298,742	\$328,616	\$13,692	26.89%	6.30%	\$326,059	\$358,665	\$14,944

Hypothetical Account Value



Hypothetical LTC Benefit Balance



THIS ILLUSTRATION IS NOT AN OFFER TO CONTRACT

Indexed Annuity Care®

Individual Single Premium Deferred Fixed Indexed Annuity with Index-Linked Interest and a Long-Term Care Insurance Rider - Illustration

Prepared for:

William

Gender: Male

Age: 69

State: CA

Premium: \$200,000.00

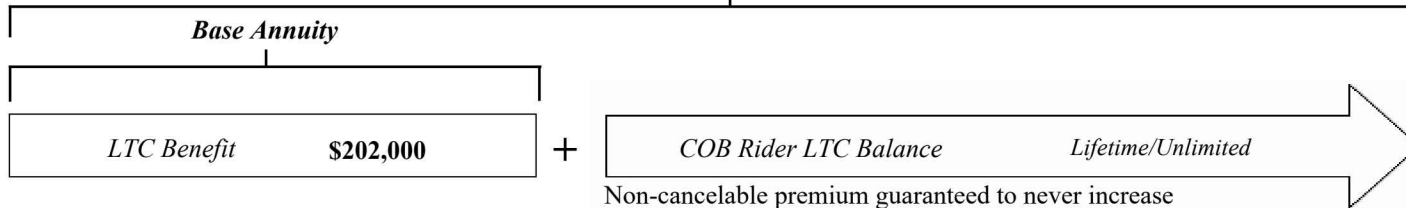
Annuity Type: Non-Qualified

It is assumed the single premium will be paid no later than upon issuance of the contract.

Presented by: JACK L LENENBERG

	Base Annuity	OR	Base Annuity + Lifetime COB Benefit Period
Initial LTC Benefit Balance	\$202,000		\$202,000
Total LTC Benefit Balance	\$202,000		Lifetime/Unlimited
Total LTC Benefit Period	24 Months		Lifetime/Unlimited
Initial Monthly Benefit <i>Home Health Care, Residential Care Facility, Nursing Facility, Adult Day Care, (see Outline of Coverage)</i>	\$8,417		\$8,417 (COB)
LTC Benefit Balance Account Value Multiplier	Factor Increases from 1.01 in Year 1 to 1.15 in Years 15 and Beyond		Multiplier applies to Base Annuity only
Rider Inflation Option	N/A		0% Compound
Total Initial Premium	\$200,000		\$205,383.85
Subsequent Annual Premium	\$0.00		\$5,383.85

Base Annuity + Continuation of Benefits Rider



Benefits and values are based on Current (Non-Guaranteed) rates, assume no withdrawals, and are based on the premium shown. More Continuation of Benefits for LTC Insurance Rider information is located under Optional LTC Provisions section of this illustration.

THIS ILLUSTRATION IS NOT AN OFFER TO CONTRACT

Indexed Annuity Care®

Individual Single Premium Deferred Fixed Indexed Annuity with Index-Linked Interest and a Long-Term Care Insurance Rider - Illustration

Prepared for:

William

Gender: Male

Age: 69

State: CA

Premium: \$200,000.00

Annuity Type: Non-Qualified

It is assumed the single premium will be paid no later than upon issuance of the contract.

Presented by: JACK L LENENBERG

LTC Benefit Withdrawals

LTC withdrawals can be taken from the Long-Term Care Benefit Balance (LTCBB) for the actual monthly expenses for qualified LTC services up to the monthly LTC limit. The numbers below are based on the LTCBB values used previously in this illustration.

The basic withdrawal period is 24 Months.

Maximum Monthly LTC Withdrawals for One Covered Person - 24 Month Option

Withdrawals Beginning at End of Year	Age	Monthly Maximum Amount from LTCBB at Guaranteed Interest	Monthly Maximum Amount from LTCBB at Projected Interest
5	74	\$9,085	\$10,510
10	79	\$10,980	\$14,059
15	84	\$13,243	\$17,654
20	89	\$15,278	\$22,541
25	94	\$17,626	\$27,076
30	99	\$20,334	\$34,571
35	104	\$23,458	\$41,526
40	109	\$27,063	\$53,021
45	114	\$31,221	\$63,687

THIS ILLUSTRATION IS NOT AN OFFER TO CONTRACT

Indexed Annuity Care[®]

Individual Single Premium Deferred Fixed Indexed Annuity with Index-Linked Interest and a Long-Term Care Insurance Rider - Illustration

Prepared for:

William

Gender: Male

Age: 69

State: CA

Premium: \$200,000.00

Annuity Type: Non-Qualified

It is assumed the single premium will be paid no later than upon issuance of the contract.

Presented by: JACK L LENENBERG

Long-Term Care Benefits Continuation Rider, Form R530 (CA) PPA
Initial Rider Long-Term Care Monthly Benefit Limit: \$8,417

Without Nonforfeiture Benefit

PREMIUMS FOR:	Inflation Protection		
	0%	3%	5%
Guaranteed Single Premium			
24 Months Coverage	\$24,804.73	\$48,242.37	\$68,897.86
Lifetime Coverage	\$64,089.65	\$124,942.79	\$178,493.76
Guaranteed Annual Premium			
24 Months Coverage	\$1,971.77	\$3,813.57	\$5,430.56
Lifetime Coverage	\$5,383.85	\$10,714.93	\$15,291.16

Projected Monthly Long-Term Care Benefit Amounts Available
 Based on 0% Inflation

Year	Rider Benefit Amount
10	\$8,417
20	\$8,417

THIS ILLUSTRATION IS NOT AN OFFER TO CONTRACT

Indexed Annuity Care®

Individual Single Premium Deferred Fixed Indexed Annuity with Index-Linked Interest and a Long-Term Care Insurance Rider - Illustration

Indexed Annuity Care®



Indexed Annuity Care®

Individual Single Premium Deferred Fixed Indexed Annuity with Index-Linked Interest and a Long-Term Care Insurance Rider

Disclaimer: This is a solicitation of insurance. An insurance producer will contact you. This contract with the riders may not cover all of the costs associated with long-term care incurred by a covered person during the period of coverage. The long-term care insurance riders have exclusions, limitations and reductions. Please review the accompanying outlines of coverage for a description of benefits, eligibility, limitations and exclusions. **The State Life Insurance Company, Indianapolis, Indiana,** will do limited medical underwriting to determine if an applicant is (are) eligible for coverage.

The S&P 500® Index is a product of S&P Dow Jones Indices LLC (“SPDJI”), and has been licensed for use by **OneAmerica Financial Partners, Inc.** Standard & Poor’s®, S&P® and S&P 500® are registered trademarks of Standard & Poor’s Financial Services LLC (“S&P”); Dow Jones® is a registered trademark of Dow Jones Trademark Holdings LLC (“Dow Jones”); and these trademarks have been licensed for use by SPDJI and sublicensed for certain purposes by OneAmerica Financial Partners, Inc. **OneAmerica Financial Partners, Inc.'s Indexed Annuity Care** is not sponsored, endorsed, sold or promoted by SPDJI, Dow Jones, S&P, their respective affiliates, and none of such parties make any representation regarding the advisability of investing in such product(s) nor do they have any liability for any errors, omissions, or interruptions of the S&P 500® Index.

THIS ILLUSTRATION IS NOT AN OFFER TO CONTRACT